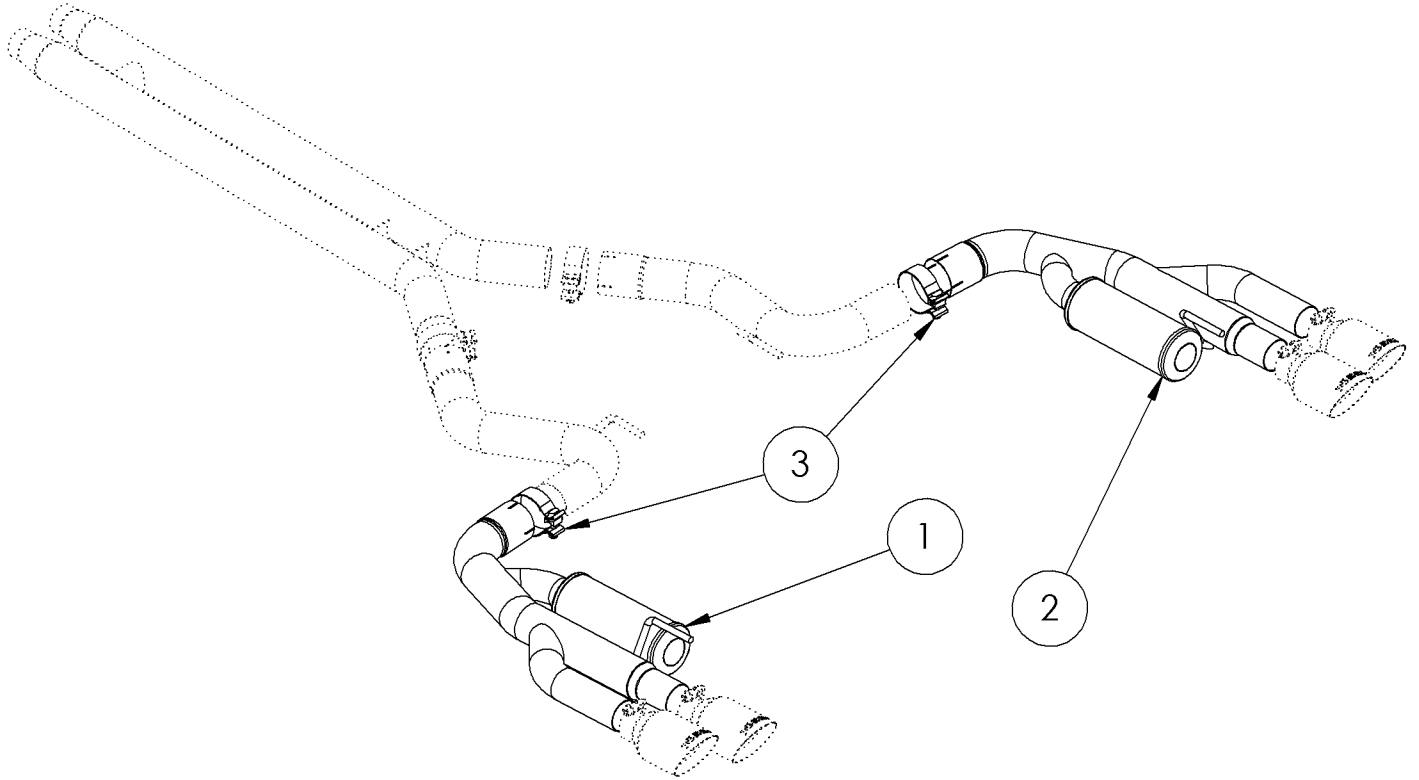


MDA7205/MDB7205/MDS7205

FITS SYSTEMS: S7205, S7280,
STREET TO RACE CONVERSION KIT

MBRP®



ITEM	DESCRIPTION	QTY
1	DRIVER-SIDE MUFFLER ASSEMBLY	1
2	PASSENGER-SIDE MUFFLER ASSEMBLY	1
3	3.0" CLAMP	2

Refer to this LOT NUMBER when contacting customer service: _____

PLEASE READ BEFORE STARTING INSTALLATION

While MBRP has made every effort to ensure that all components of this system are of superior quality and properly packaged, it is the installer's responsibility to ensure the following before removal of the factory exhaust:

- that ALL components shown above are present.
- that ALL mating components fit together.
- that there are no damaged components.
- that the system you have purchased is appropriate for your vehicle year, model and configuration.
- that the system will not interfere with any modifications previously installed or planned.
- that you have read and understand these instructions.

If you have any questions or are uncertain about any aspect of the installation of this system to your vehicle please contact your dealer before commencing installation.

MBRP

Removal of MBRP Components

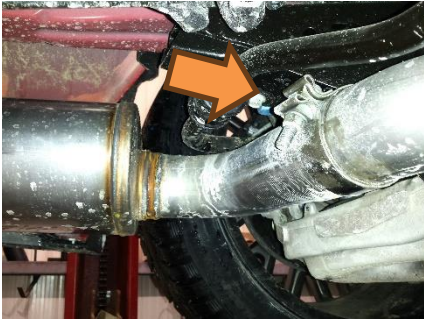


Figure 1

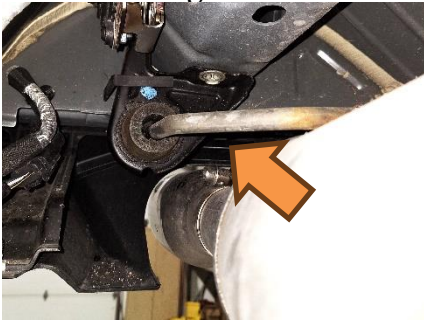


Figure 2



Figure 3



Figure 4

1. Remove the **Tips**, retaining them for the installation.

2. Loosen and slide back the two **3.0" Clamps** connecting the **Pipe Assemblies** to the **Muffler Assemblies**.

Refer to Figure 1.

3. Carefully remove the **Muffler Assemblies**, by unbolting the OEM hanger brackets to allow the mufflers to swing down. Retain the rubber insulators and brackets for the installation. Discard the two **Clamps**, leaving the **Pipe Assemblies** in place.

Refer to Figure 2.

Installation of MBRP Performance Exhaust

1. Place the supplied **3.0" Clamps** onto the outlets of the **Driver and Passenger Pipe Assemblies**.

2. Install the OEM hanger brackets onto the **Muffler Assemblies**. Rotate the **Muffler Assemblies** into position, securing using the **Clamps** and the previously removed hanger bracket hardware.

Refer to Figures 2 and 3.

3. Install the **Tips** and tighten just enough to allow for alignment. Align the exhaust as required to center the **Tips** in the rear fascia, and provide clearance around all other undercar components, then tighten all clamps.

Note; The mid hanger brackets can be used to help center the tips in the fascia. Once all clamps are tight, adjust the mid hanger brackets to fine tune the placement of the Tips, then tighten the M8 Bolts

Refer to Figure 4.

4. **Ensure that the alignment of all parts of the system and tips has been maintained.** Align the edge of each band clamp with the edge of the joint it is connecting. Tighten all hardware and clamps, starting at the front and working rearward to secure the system. Check along the full length of the exhaust system to ensure there is adequate clearance for fuel lines, vent lines, brake lines, frame, bodywork, suspension and any wiring, etc. If there is any interference detected, relocate or adjust to provide adequate clearance. Ensure all clamp connections are secure and components are unable to rotate or slide. Band clamps (excluding tip hardware) require approximately 45 lb-ft (60 N-m) of torque. Verify clearances, system security and band clamp torque after 30-60 miles (50-100 km) of driving.

Congratulations! You are ready to begin experiencing the improved power, sound and driving experience of

your **MBRP** Performance Exhaust.

We know you will enjoy your purchase!